

033347

RECEIVED
LARAMIE COUNTY
CHEYENNE, WY.

CERTIFIED LAND CORNER RECORDATION

'87 AUG 28 AM 9 08

DESCRIPTION OF CORNER EVIDENCE FOUND, AND ORIGINAL RECORD (if known)

FOUND: NO EVIDENCE OF PREVIOUS MONUMENTATION.
SET: 1/2" X 12" LONG REBAR WITH ALUMINUM CAP STAMPED "555 LS. 2500"
PROJECTING 0.3 FEET BELOW ROAD SURFACE SET AT PROPORTION
ATE DISTANCE AND FROM ADJACENT LAND OWNERS TESTIMONY.

7.15 N.

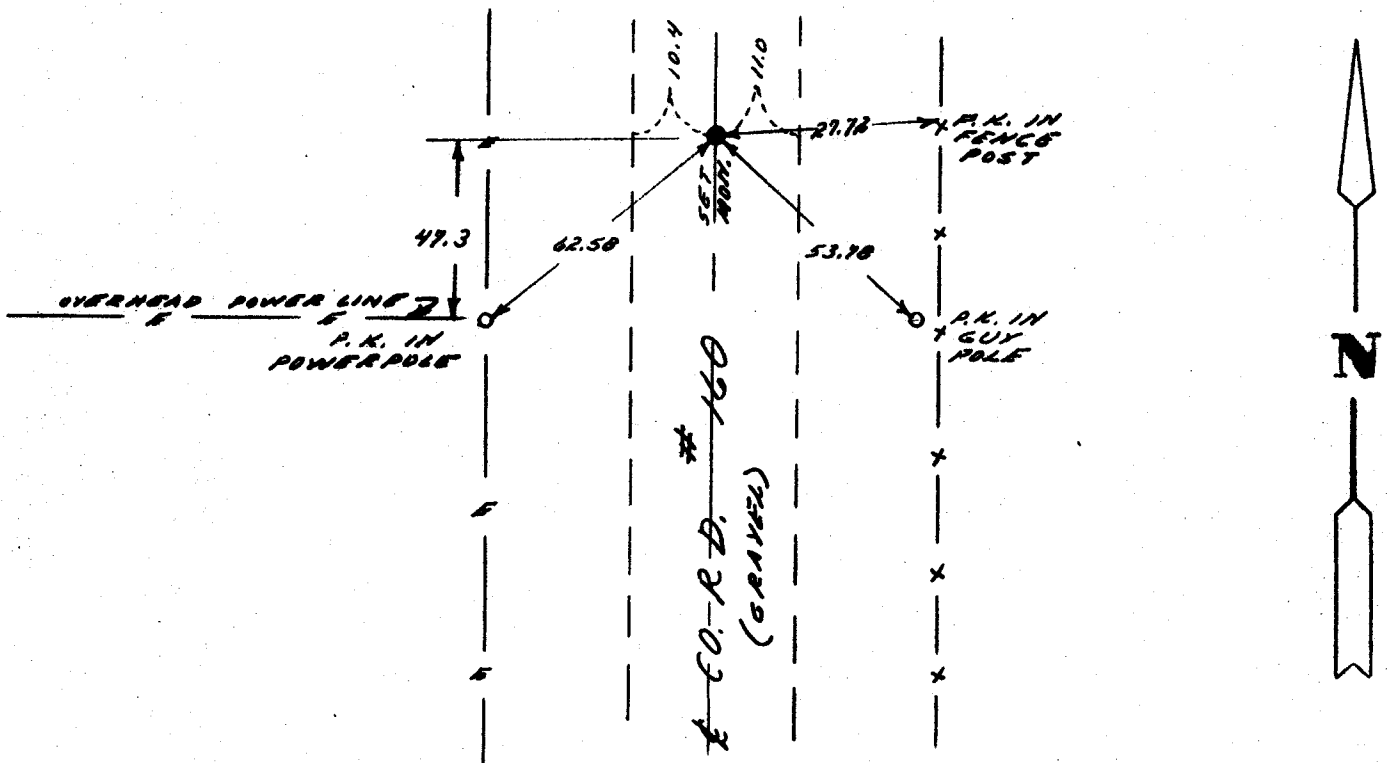


R. 61 W. R. 60 N.

DESCRIPTION OF MONUMENT AND ACCESSORIES ESTABLISHED
TO PERPETUATE THE ORIGINAL LOCATION OF THIS CORNER:

SEE TIES BELOW

SKETCH, WITH COURSE AND DISTANCE TO ADJACENT CORNER IF DETERMINED IN THIS SURVEY.
(May Sketch or Paste Reproduction on Reverse Side.)



I, JOHN A. STEIL certify that I have carefully performed or reviewed the work done on the diagrammed corner as reported on this recordation form, and approve the same.

John A. Steil
Signature of Surveyor

LS 2500
Registration No.

STATE OF WYOMING,
Office of Clerk and Recorder,
County of Laramie

This "corner record" was filed for record on the 28 day of August, 1987, was noted on the cross-index plat and is assigned page No. _____, in book No. _____

John C. [Signature]
County Clerk

Cross Index No. <u>J-25</u>	T. <u>15N</u>	R. <u>60W</u>	Mer. <u>622</u>
<u>5-1</u>	T. <u>15</u>	R. <u>60W</u>	Mer.
_____	T. _____	R. _____	Mer.
_____	T. _____	R. _____	Mer.
_____	T. _____	R. _____	Mer.
_____	T. _____	R. _____	Mer.

BOOK 1250

J-1 15-60
J-25 15-61

1317